



## St Martins Street, Bury St Edmunds, Suffolk, IP33 1JL

Rent - £1,350 Per Month

Deposit - £1,557

Nestled in the charming town of Bury St Edmunds, this delightful end terrace house on St Martins Street offers a perfect blend of comfort and convenience. With two well-proportioned bedrooms, this property is ideal for small families, couples, or individuals seeking a peaceful retreat in a vibrant community.

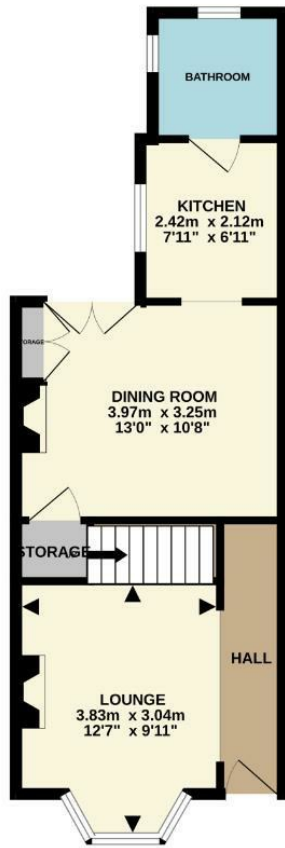
The house features two bathrooms, ensuring ample facilities for residents and guests alike. This thoughtful layout enhances the living experience, providing both privacy and practicality. The end terrace design allows for

- 2 BEDROOM TOWN CENTRE HOUSE
- FURTHER DOUBLE BEDROOM
- COURTYARD STYLE GARDEN
- COUNCIL TAX BAND B
- ON ROAD PERMIT PARKING
- EN SUITE TO MAIN BEDROOM & GROUND FLOOR BATHROOM
- GAS RADIATOR HEATING & ENERGY RATING D
- 2 RECEPTION ROOMS
- CHARACTER FIREPLACES AND FEATURES

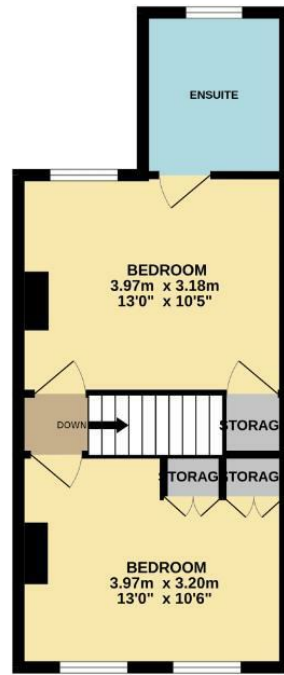


Council Tax Band: B - EPC Rating: D 60

GROUND FLOOR  
37.9 sq.m. (408 sq.ft.) approx.



1ST FLOOR  
33.5 sq.m. (361 sq.ft.) approx.



TOTAL FLOOR AREA: 71.4 sq.m. (769 sq.ft.) approx.  
Whilst every attempt has been made to ensure the accuracy of the floorplan contained here, measurements of doors, windows, rooms and any other items are approximate and no responsibility is taken for any error, omission or mis-statement. This plan is for illustrative purposes only and should be used as such by any prospective purchaser. The services, systems and appliances shown have not been tested and no guarantee as to their operability or efficiency can be given.  
Made with Metropix ©2025

